



# Fanfare

Strathroy, Ont.  
Chapter  
Established  
1995  
Member of  
Ontario  
District

"Home of the  
Vocal Federation  
Chorus"

*"Trumpeting the Federation's news to its borders and beyond"*

## CHAPTER INCORPORATION -FIRST OFFICIAL MEETING-

### Gentlemen:

As per discussion at the Board meeting this past week, Wednesday, September 29, 2004 @ 7:00 p.m. was established as the date to hold the "First Directors" meeting of the Corporation. As I explained, both George Sinker and Sydney Pearson have expressed their opinion that it is very important to do everything possible to have all the **Directors** present at that meeting.

Their main reason for wanting **100% attendance is because it is at this meeting that we, Directors and Officers, are appointed to our respective positions in the Corporation.**

It is also at this meeting that we pass By-Law No 1, applicable generally to the transaction of the business and affairs of the company, By-Law No 2 regarding banking arrangements with the Sydenham Credit Union, the appointment of auditors for the Corporation and any other business that may come before the meeting

A copy of By-Law No 1 is attached. It is the Standard Chapter By-Law demanded by the Society, except for a couple minor amendments mutually agreed to by the Society and Sinker.

I do not have samples of the other documents on the computer to send, however, can have hard copies for distribution at the next Board meeting. Please let me know if you want same to review prior to the meeting [I will be away September 7-25/26].

Please let Frank know if you are unable to attend on the 29<sup>th</sup>.

Thanks.

Orval Allen,

Chapter Secretary.



## Directory Updates:

### Welcome Ray Mason

Ray Mason became the chapter's newest member on September 2, 2004. Address: 21765 Adelaide Rd Mount Brydges, N0L1W0; Telephone; 264-1850, E-mail:(work) [rmason@overheadcrane.com](mailto:rmason@overheadcrane.com) Employment: Overhead Crane, London (686-8181). Significant other : Maxine.

Sings lead.

## Change of address:

Leslie and Donna Campbell, 111 Ridge St.,

Strathroy, ON. N7G 4K2.

Next Fanfare Deadline: Oct. 20,2004.

## Barbershop weekly NEWS & NOTES

While Roswell McPherson is away, please keep sending any announcements you have to Bill Gough for inclusion in the Chapter's weekly News and Notes.

**Future Meetings:** Show committee at 7:00 p.m. & Board of Directors at 8:00 p.m.. Sept. 28,2004.

# Ontario District Entries received for **Parkhill Performance** Ontario District Fall Contest to August 28, 2004

by **Ron Carradine**

**FIVE WEEKS TO GO!!!**

Entries received for Ontario District Fall Convention  
Contests to August 28th

Choruses

Hamilton

Peterborough

Greater Toronto

Quartets

The Fixx

Sound Association

Play It Again!

As Time Goes By



Take a few minutes now and get your entry in!  
Simply log onto the Society website

[www.spebsqsa.org](http://www.spebsqsa.org), go to the Members Only page,  
then go to the Contest & Judging Community heading,  
click on the Contest Entry and complete the  
appropriate form (quartet or chorus entry).

When you complete the form with the District  
correctly identified as Ontario, it is automatically sent  
to me. I will confirm receipt of the entry and  
you will be IN!

The following contests will be held this Fall:

International Preliminary Chorus Contest

Ontario District Quartet Contest

International Preliminary Seniors Quartet Contest

Ontario District Novice Quartet Contest

**DEADLINE FOR ENTRIES IS FRIDAY October 1,  
2004.**

The draw will be made October 2nd and sent to the  
Ontario mailing list  
(plus posted on the District Web Site)

**DON'T DELAY. Get your entry in NOW!**

**Barry Towner**

**ONT VP Contest & Judging**

It's Tuesday evening, August 24, and I have just been informed that I will not be allowed to visit my dad in the nursing home at Chateau Gardens in Parkhill due to some sort of virus outbreak. At this point certain questions are starting to crowd this limited capacity I call a brain.

We are scheduled to practice and do a little singing there on the following evening. Obviously we will not be allowed to enter the home but has anyone been informed? So, on the telephone I get and start calling, first "Arnie", he had not heard anything. Next "Jim", he hadn't heard anything either, but suggested I call the "man" himself. Of course!!! that's where I should have started. So I call "Bill" (Robertson, that is). No!! he hasn't heard anything either, but assures me he will contact the home the next morning.

I spend all day Wednesday waiting to be told it's canceled, but I hear nothing. so, like a true Barbershopper, I tell myself the show must go on. (remember the spring concert of 2003). I proceeded to load Dianne and Dave and Joan (our English visitors) into the car and head for Parkhill. Well, surprise, surprise, miracles do happen. The venue had been switched to the retirement home across the street, where about 8 or 10 patients who were not sick plus a few guests and staff were assembled and by all accounts were thoroughly entertained, (their words, not mine).

After our performance, the nursing home presented us with refreshments and we followed up with a shortened practice session.

What a shame that out of 50+ patients so few were able to be present but at least the "show went on" so to speak. That's my story, and I'm sticking to it.



# CELEBRATIONS



## Chapter Birthdays

September 26	Joan Knoll
October 5	Stella Jackson
October 9	Gord Vair
October 3	Grant Knox
October 7	Ron Carradine
October 11	John Gough
October 16	Bob Fennell
October 22	Donna Campbell
October 27	Ernie McEwen
October 28	Brian McDougall
October 30	Sandy McDougall



- authorized to use "Barbershop Harmony Society" as the Society's official name in all communications..
- Chapter trailer insured through the Society's Insurance.
- Ontario District Board is restructured to a small group of approximately 6 people elected by chapter representatives.
- Average chapter size in Society is 19.5 members.
- 2005 show ticket price approved at \$15 per person.
- President working on nominations for 2005 Board.

## Coming Events



Sept 18 Wild Game Night..Bob and Eunice Fennell.

Sept. 20..Chapter's 9<sup>th</sup> anniversary.

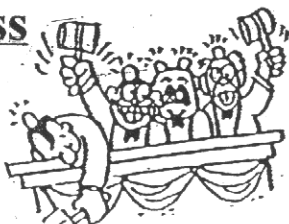
Sept. 25<sup>th</sup> Golf Tournament. Dinner at 5.30. Wardsville Golf & Country Club. Hosts - Tom & Elaine Linden.

October 2...London Chapter show.

## Chapter Anniversaries

October 8	Ros & Marilyn McPherson
October 15	Frank & Joan Knoll
October 21	Bill & Fran Galbraith
October 31	Orval & Norma Allen

## Board's Business



- Strathroy On. Chapter of SPEBSQSA, Inc. ...incorporated June 16, 2004. First official meeting with solicitor Sept.29, 2004 at 7:00 p.m. All Directors to be present.

- October is election of officers time
- Fall convention is in Brantford October 15-17, 2004.

Nov 3 or 17<sup>th</sup>, practice at Brookside (Watford) ????????

10 n 24

- Nov 28, Western Division Christmas
- Dec 4, Chapter Christmas Dinner Party @ Presbyterian Church, St. Andrews" Country Kitchen.

# **SOCIETY NEWS**

(received as e-mail)

## **BOARD ACTION AFFECTS CHAPTER ELECTIONS**

### **Elect a Chapter Marketing and PR Vice President**

Effective January 1, chapters with more than 25 members will be required to have a vice-president of marketing and public relations. Chapters with fewer than 25 members are encouraged to have a M&PR vice-president as well.

The Board action is being taken to help increase efforts in marketing and public relations, and therefore public awareness of barbershop harmony. The Society's Standard Chapter Bylaws will be amended to reflect the change.

With fall elections coming up, members of the chapter nominating committees should submit names for the M&PR vice-president along with those for other required offices.

## **CHAPTER OFFICER TRAINING**

Plan to attend COTS: It's not just for officers.

The 2004-2005 COTS season is just about upon us. So, check your district calendars and plan to be there. COTS is the very best way to get the most current information, rules, tips and planning ideas to make 2005 the best ever for your chapter. Classes are open to anyone who is interested.

A complete list of COTS dates and locations is available on the Society Web site at [www.spebsqsa.org/id\\_037850](http://www.spebsqsa.org/id_037850)

Registration information should be available on all district web sites and/or through your chapter.

## **INTERNATIONAL CONVENTION**

Look for Early Bird housing information in late fall

Housing information for the 2005 international convention in Salt Lake City will appear in the January/February 2005 Harmonizer magazine and

online shortly thereafter. Early Bird registrants will get their housing information in late November/early December. The cutoff for Early Bird registration is September 15, 2004. For information, please go to [www.spebsqsa.org/saltlake](http://www.spebsqsa.org/saltlake) or call 800-876-7464 x8462.

## **VETERANS DAY/REMEMBRANCE DAY**

Honor those who served

Here's your chance to get involved and pay tribute to veterans and our men and women in uniform who serve our countries around the globe. The Society will again sponsor an international community service project. The team has selected Veterans' Day (USA) and Remembrance Day (Canada), both of which occur November 11, as a fitting tribute. The U.S. Department of Veterans Affairs and the Canadian Ministry for Veterans will endorse our project and support it with communications.

To learn how your chapter can participate, visit [www.spebsqsa.org/remembrance](http://www.spebsqsa.org/remembrance) If you've already decided to participate, please be sure to fill in the registration form for acknowledgement.

## **MEDIA RELATIONS**

Lists of media outlets available

The Society now has the capability to provide media lists — for specific purposes — to chapter and district officers. Lists are available for newspapers, radio and television stations. Our database DOES NOT allow searches based on a certain distance radius around a city (e.g. 250-mile radius around Kenosha). Requests must be for a specific state, county or city and by media outlet type. For more information, go to [www.spebsqsa.org/id\\_063372](http://www.spebsqsa.org/id_063372)

## **REGISTER FOR UPCOMING CONVENTIONS**

Register for the Jacksonville midwinter convention

Take a trip to the Sunshine district and state for a great week of barbershop harmony. Midwinter runs January 23-30, 2005. Registrations as of the end of July number 255. To register, use the form in The Harmonizer or call 800 876 7464 x8462 or go online to <http://www.spebsqsa.org/midwinter>

5  
(“A BARBERSHOP QUARTET JOB DESCRIPTION” was prepared by veteran tenor barbershopper Peter Hughes of the London Chapter and contributed to Fanfare by Craig Bycraft. This material is unedited.)

Tenors

### THE MOST IMPORTANT PART!

If You Asked The Average Guy On The Street (over 40) To Harmonize With Your Melody Line, He Would Probably Sing Closest To Barbershop Tenor.

The TENORS have three basic responsibilities-- BALANCE, PITCH and STAY OUT OF THE WAY. (Volume)

1. BALANCE - MOST TENORS ARE TOO LOUD MOST OF THE TIME.
    - A) Tenors nearly always sing thirds or sevenths of a chord.
    - B) Tenors nearly always sing the highest note of a chord.
    - C) Those two statements imply that the tenors should sing relatively softly most of the time.
    - D) Learn to recognize exceptions to ( c ).
      - I. Tenor melody, usually in Tags.
      - II. Tenor sings Root, usually In “Chinese Sevenths”.
      - III. Tenor sings Fifth.
      - III. Tenor sings Under lead
    - E) Be aware of where you are in relation to the rest of the chord.
      - I. Tight chords--You can sing relatively louder.
      - II. Spread Chords---Sing relatively more Softly
      - III. Watch SAME NOTES SUNG DIFFERENTLY because of the Chord.
  2. PITCH - BASIC TONE SHOULD BE THIN and LIGHT, (but not necessarily bright), (Glitzy) SUNG “ON TOP” OF THE NOTE.
    - A) Since Tenors must often sing Vowels on the “DARK” side , and darker tones have a tendency to sound flatter than brighter tones, it is IMPERATIVE that Tenors SING On the TOP SIDE the NOTE.
    - B) Learn to recognize when to DARKEN the Vowel. There may not exist a Tenor who can sing Sharp without really working at it.
  3. STAY OUT OF THE WAY.
    - A) Don't let “Mechanical” Problems Interfere with the Musical Flow.
      - I. Never emphasize hard consonants
      - II. Do emphasize singable consonants
      - III. Plan ahead to find the best place to SWITCH “OUT” of Falsetto.
- AN EXTREMELY KNOWLEDGEABLE TENOR INFORMED ME THAT THIS LAST CATEGORY, STAY OUT OF THE WAY, IS THE MOST IMPORTANT ONE FOR TENORS.  
(All this is why it is the most important part)



# BARITONE



## THE MOST IMPORTANT PART!

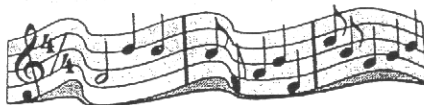
An exhaustive survey of our Society, forces one to conclude that baritones are, almost without fail, the most talented, the best looking, the most under-rated, and the most humble members of the S.P.E.B.S.Q.S.A. (In Their Own Minds!)

For many years, it was universally agreed (at least within the Society) that Baritones should be seen but NOT heard. In the last 15-20 years the role of the Baritone has changed significantly. (But NOT the jokes about Baritones--Those will never change!)

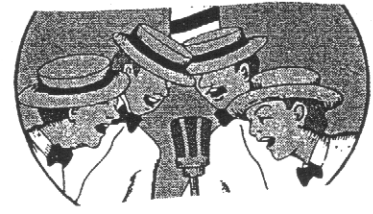
BARITONES have the same BASIC responsibilities as Tenors, But in a different order.  
1-BALANCE: 2-PITCH: 3-STAY OUT OF THE WAY.

1. BALANCE-- If you would listen critically to nearly any non-quartet Baritone, (as well as a great many Quartet Baritones) You would find that they sing out of Balance MOST of the time. They are TOO LOUD when they are ABOVE the Lead, and NOT LOUD ENOUGH when they are BELOW the Lead.
  - A) The Baritones balance responsibility changes often, dictated to a large extent by whether he is Above or Below the Lead.
    - I. The general Rule is: When Bari is ABOVE the LEAD, SING MORE LIKE A TENOR: When Bari is BELOW the LEAD, SING MORE LIKE BASS.
  - B) Be aware not only of whether you are above or below the Lead, BUT HOW FAR Above or Below the Lead you are.
    - I. The closer you are to the TENOR, the MORE you must MATCH the Tenor.
    - II. The closer you are to the BASS, the MORE you must MATCH the Bass.
    - III. The closer you are to the LEAD, the MORE you must MATCH the Lead.
  - C) When singing the same note as another voice part, the Baritone surrenders the note.
    - I. Usually Bass, occasionally Lead. If you singing the same note as the Tenor, SOMEONE IS WRONG!
  - D) Be aware of what part of the chord you have.
    - I. Bass nearly always sings ROOT or FIFTH, Tenor nearly always sings THIRD or SEVENTH, But Bari can have any part of the chord at any time.
    - II. Since the Second Balance RULE is "balance to Roots and Fifths", Bari's MUST Determine when they are singing Root or Fifth and FILL. An exception is when the Bari is singing a Root an octave above the Bass. SING WITH LEAD QUALITY AND POWER, but you have to know when to "throttle back"
2. TUNING. -- it is usually preferable for the Baritone to TUNE to the Bass instead of the Lead because it is easier to tune to a pitch below you then to tune to one above you.

AS a general rule, Thirds and Fifths have to be sung a TAD SHARP, Sevenths have to be sung a LITTLE BIT FLAT.







BARITONES CONTINUED

- A) A common trap for Baritones is to assume that because two consecutive notes are written the same, they are sung the same.
  - I. As an example if "I WISH" were written as the same notes, but "I" is the Third of the chord, while "wish" is a Fifth. Tuning is no problem, but they must be Balanced Differently.
  - II. Another Example: two Chords on the word "ME". The Bari note is the same On paper, but they must be tuned quite differently. The first is Eb the Seventh of the chord, sung a bit flat, while the second is actually D#, a Third, which must be tuned just a little bit Sharp. Balance there is easy enough, but tuning is difficult.

3. STAY OUT OF THE WAY OF THE MUSICAL FLOW.

- A) Soft pedal hard consonants, and energize singable consonants

That is why it is the most important part.

The task of singing Baritone is properly accomplished when no one is aware of your part being sung. A quartet Baritone soon discovers that he has NO VOCAL identity.

AS YOU CAN SEE EVERY PART IS IMPORTANT, EACH IN IT'S OWN WAY.

ENJOY SINGING GOOD BARBERSHOP, SING THE BEST YOU CAN.

ARE YOU SINGING THE BEST YOU CAN, OR CAN YOU SING BETTER?



**Annual Chapter Horseshoe Pitch on August 18 is well attended**

The chapter's annual horseshoe pitch was held on August 18 at the home of John and Jeanne King. Over 20 chapter members attended the BBQ and horseshoe pitch competition. The 2005 champions are **Jim McDougall** and **Ted Gough** and second place went to **Bill Gough** and **Gord Vair**. Special thanks to **John and Jeanne King** for hosting this year's event, **Les and Donna Campbell** for supplying delicious baked beans, **Frank Knoll** for providing fantastic sweet corn and to all of you for attending and making this social occasion a fun evening.

**Congratulations to Ken Vanderheyden** for submitting an article to Fanfare that made the last issue of the provincial barbershop publication, **The Trillium (Waldo Redekop, editor)**. Just remember I told you, if you submit good articles to Fanfare, you may also become famous!!

**Strathroy Chapter**  
 Western Division - Ontario District - SPEBSQSA  
 Home of the "Vocal Federation"  
 The performing chorus of the Strathroy Chapter

**Board of Directors**

<b>President</b>	Frank Knoll	(519)264-2856
<b>District Delegate</b>	Jim McDougall	(519) 245-0843
<b>Treasurer</b>	Les Campbell	(519) 245-0359
<b>Secretary</b>	Orval Allen	(519) 246-1234
<b>Chapter Dev. V.P.</b>	Bob Fennell	(519) 693-4280
<b>Music V.P.</b>	Arnold Dixon	(519)294-0128
<b>Communication V.P.</b>	John King	(519) 245-0762
<b>Program V.P.</b>	Bill Gough	(519) 245-2244
<b>Performance V.P.</b>	Bill Robertson	(519) 245-0979
<b>Board Mem. At Large</b>	Roswell McPherson	(519) 245-1711
<b>Board Mem. At Large</b>	Gil Craenen	(519) 245-2888

Appointments

<b>Quartet Activity Chairman</b>	Gord Vair
<b>Historian</b>	Ernie McEwen
<b>Nominating Committee Chairman</b>	Jim McDougall
<b>Service Projects &amp; Fundraising Chairman</b>	Bill Robertson
<b>Uniform Chairman</b>	Bill Galbraith
<b>Show Committee Co-Chairman</b>	Orval Allan
<b>Fanfare Editor/Directory Publisher</b>	John King
<b>Kitchen Steward</b>	Les Campbell
<b>Sunshine Chairman</b>	Gord Nisbet

Music Team

Music V.P. - Arnold Dixon  
 Chorus Director - John Gough  
 Chorus Director - Jim McDougall  
 Librarian - Arnold Dixon

Section Leaders

Tenor - Ernie McEwen  
 Lead - Bob Howlett  
 Baritone - Ros McPherson  
 Bass - Craig Bycraft

WEB SITES

Strathroy Vocal Federation  
[www.bam.on.ca/vocalfederation/](http://www.bam.on.ca/vocalfederation/)  
 Ontario District- [www.ont.spebsqsa.org](http://www.ont.spebsqsa.org)  
 Barbershop International- [www.spebsqsa.org](http://www.spebsqsa.org)  
 Ashow  
[www.ahsow.or](http://www.ahsow.or)



*Remember to share your Fanfare with all of your family, friends and neighbours. Share the joy of singing.*

**P . R . O . B . E .**  
 The Fraternity of  
 PUBLIC RELATIONS OFFICERS AND BULLETIN EDITORS.

**Meeting at St. Andrews Presbyterian Church**  
 the corner of Albert and Richmond Streets in  
 Strathroy - Wednesday Evenings at 8:00 pm

**Vision Statement**

The Strathroy Chapter will provide the opportunity for men of all ages to blend their voices in the unique style of barbershop harmony singing and will provide wholesome musical entertainment to people of all ages throughout this and neighbouring communities wherever our services may be desired.

**Mission Statement**

- To Realize our vision, the Strathroy Chapter will:
- provide the means for men to participate in and enjoy the singing of barbershop-style harmony, both in chorus and quartet singing.
- Provide for its membership an organized process to learn and sing barbershop-style harmony from written arrangements or by "ear singing".
- Develop members vocal talents and performance abilities so that each time they sing together, they perform at the best level possible.
- Provide an atmosphere and programs which result in a high level of camaraderie and social benefit to members.
- Be a community leader in the cause of preserving and encouraging vocal music in our schools and our communities by singing barbershop music for schools, churches and social events.
- Enrich the lives of the less fortunate people in our communities by singing barbershop music for senior citizen homes, nursing homes and hospitals.
- Initiate, promote and participate in charitable projects, especially those projects which will benefit the Ontario District's barbershop charities.

The Federation's  
**Fanfare**

*Editor - John F. King*

24244 Saxton Rd., R.R. 1,  
 Strathroy, ON., Canada. N7G 3H3  
 (519) 245-0762.  
 Fax (519) 245-0762 (call first)  
 E-mail: [jfk@execulink.com](mailto:jfk@execulink.com)

Fanfare is published on eight occasions annually by the Strathroy Chapter. Contributions are invited and will be acknowledged. The Editor may edit all for clarity, content or to fit the space. All stories are written by the Editor, except those carrying another byline, and do not necessarily reflect the views of the Chapter, its officers or members.

The Federation's  
**Fanfare** is a publication of the Strathroy Chapter of the Society for the Preservation and Encouragement of Barbershop Quartet Singing America, Inc.